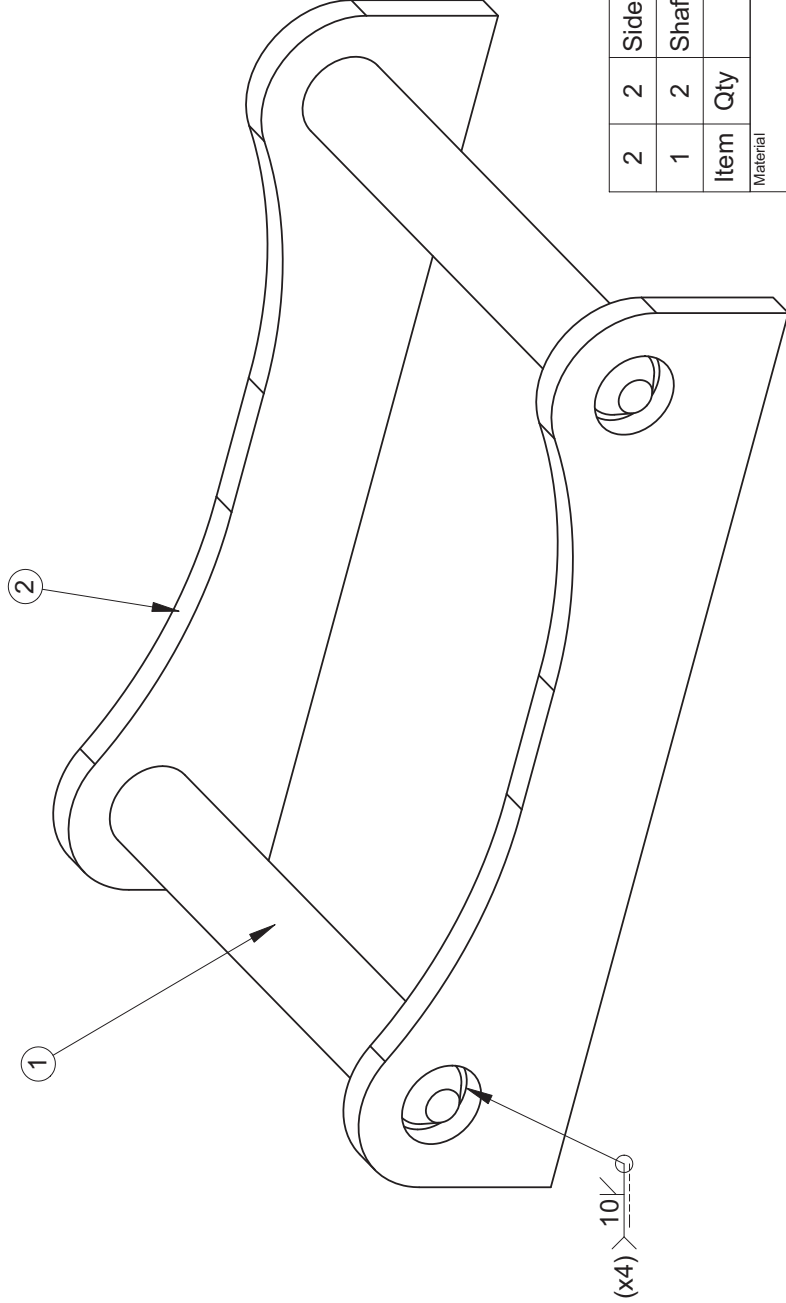
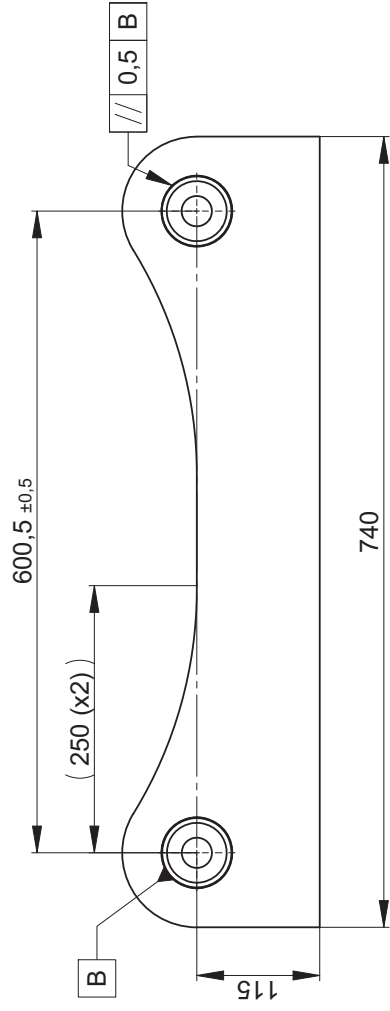
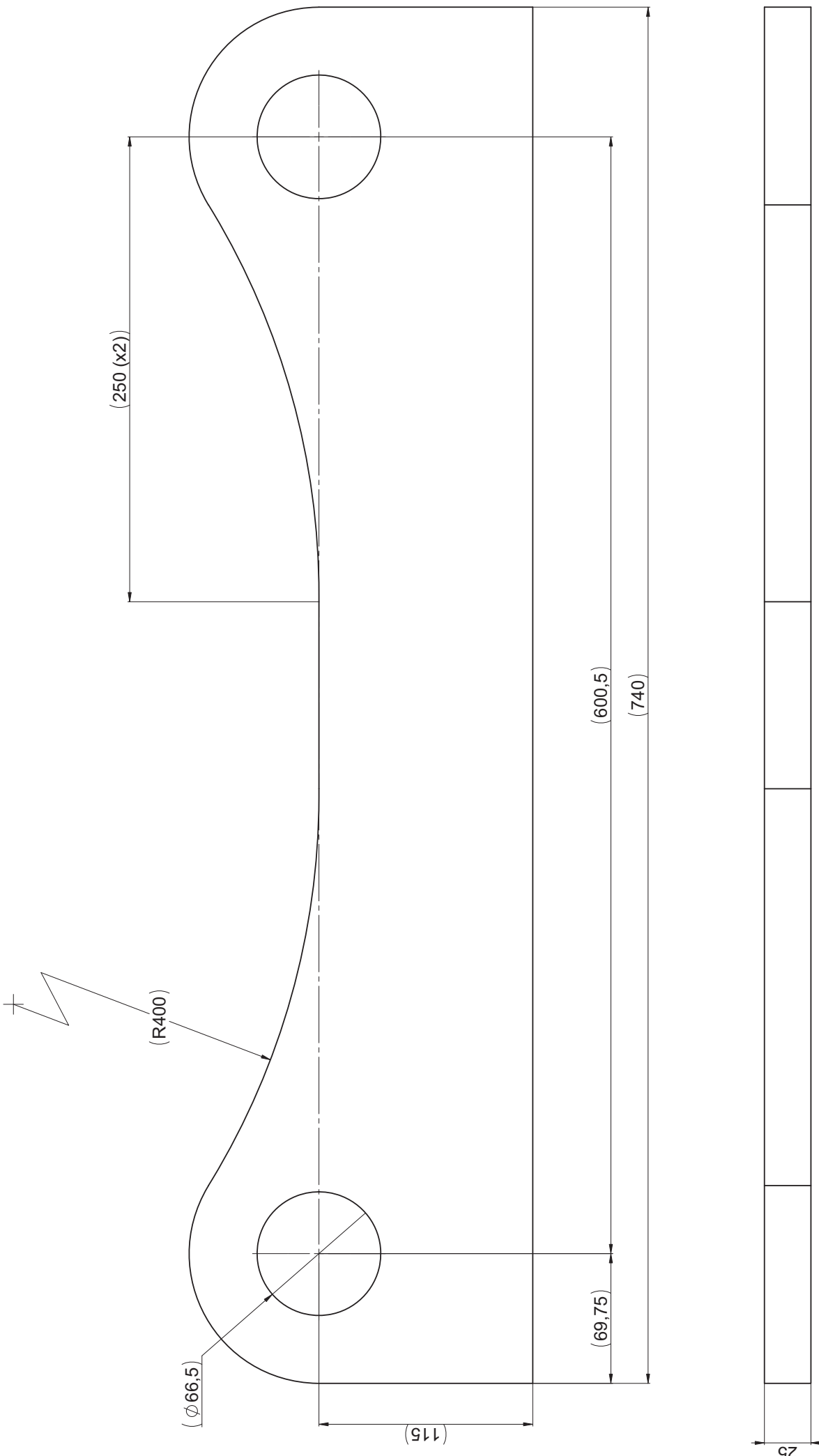


This drawing remains Steelwrist property and should not be copied without our written allowance. Nor is permitted to show or give this to a third person. Contravention will be prosecuted with the support of existing law.



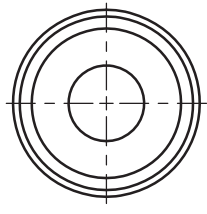
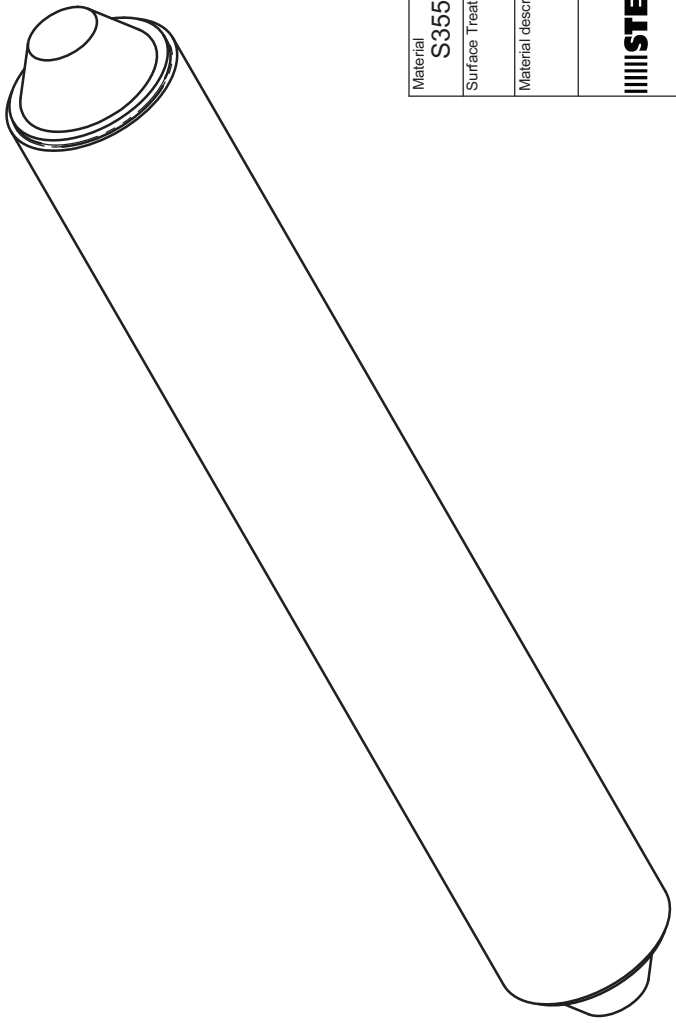
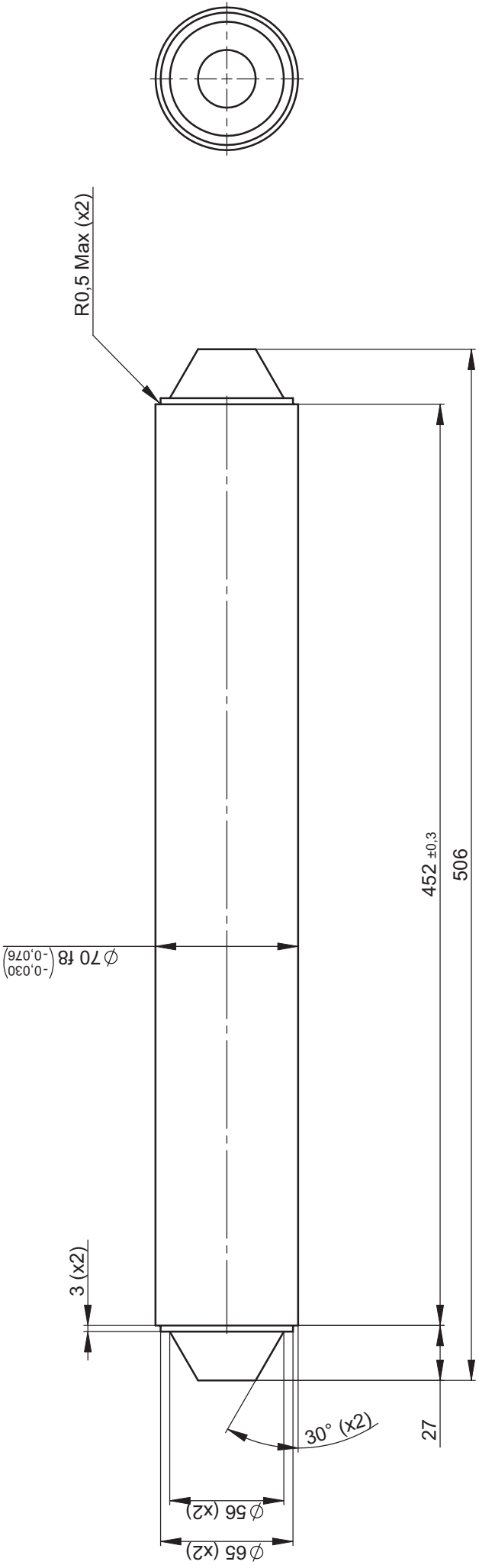
2	2	Side Plate S70	202688
1	2	Shaft S70	202689
Item	Qty	Description	Note
Material		Proj. Method E	Scale 1:4
Surface Treatment		General surf. roughn. 3,2	Drawing size A3
Material description, dimension		Weight (kg) 67.02	All dimensions metric Sharp edges broken 0.2-0.3 Hole edge radius: max 0.3
Description		S70 Bucket Adaptor	
Drawn by cri		Approved by	Date 2008-03-07
Drawing number 202687		Revision A	Sheet 1(1)



This drawing remains Steinhilber property and should not be copied without our written consent. It is permitted to show or give this to a third person. Continuation will be presented with the support of existing law.

Material	Weldbr700	Proj. Method	ISO 2768-MK	Scale	1:1	Current Reference	ISO 2768-MK
Surface Treatment		Drawing	ISO 2768-2 K	Sheet	A1	ISO 15920 CG	ISO 15920 CG
Material description, dimension	t=25	Weight	All dimensions metric	Sharp edges broken	0,2x0,3	Clamp 1:	HT/HT1
Weight	19,24	Material description, dimension	ISO 15920 CG	ISO 15920 CG	0,2x0,3	Clamp 1:	HT/HT1
Description	Side Plate S70	Drawing number	202688	Revision	A	Sheet	1/2
Drawn by	cri	Approved by	2008-03-07	Drawing number	202688	Revision	A

This drawing remains Steelwrist property and should not be copied without our written allowance. Not it is permitted to show or give this to a third person. Contravention will be prosecuted with the support of existing law.



Material	S355J2 (SS2142)	Proj. Method	E	Scale	1:2	General tolerances	ISO 2768-mk
Surface Treatment		General surf. roughn.	3,2	Drawing size	A3	ISO 2768-2 K	
Material description, dimension		All dimensions metric		Sharp edges broken 0.2-0.3		ISO 13920 CG	
		Hole edge radius: max 0.3				ISO 286-1:	
						H11/h11	
Name		Shaft S70					
Drawn by		cri		Checked by		202689	
Drawing number		202689		Drawn date		2008-03-06	
Revision		A		Sheet		1(1)	