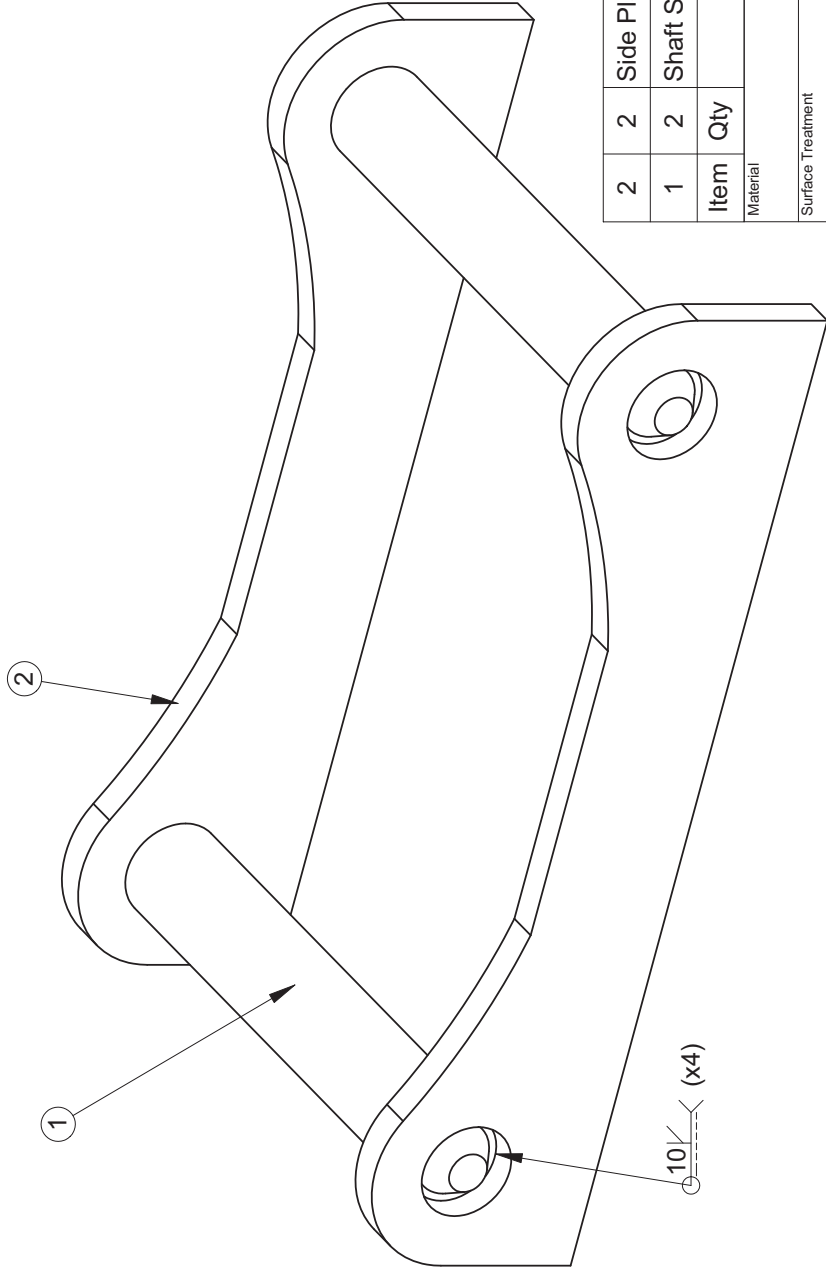
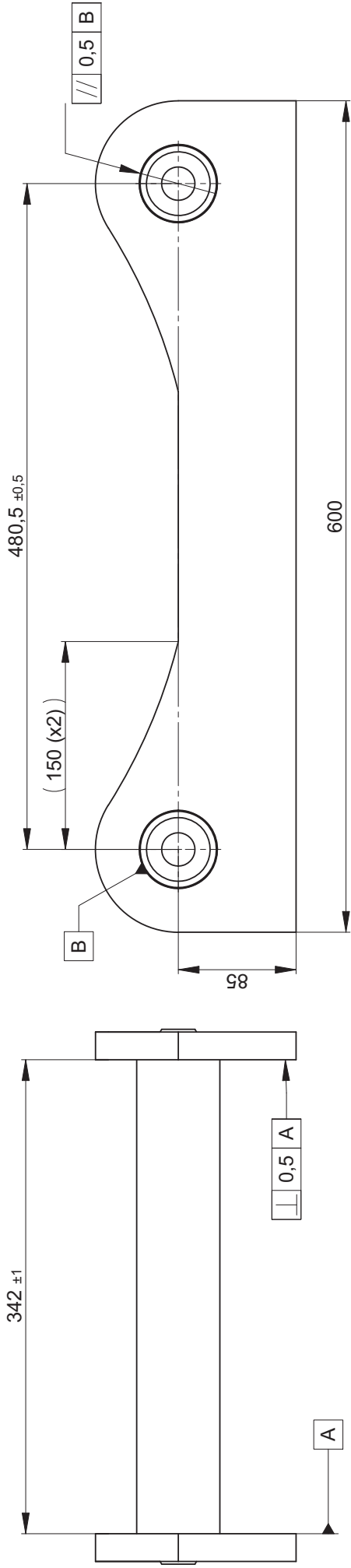
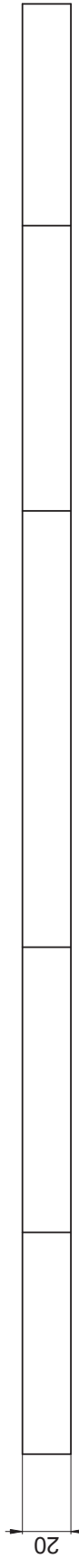
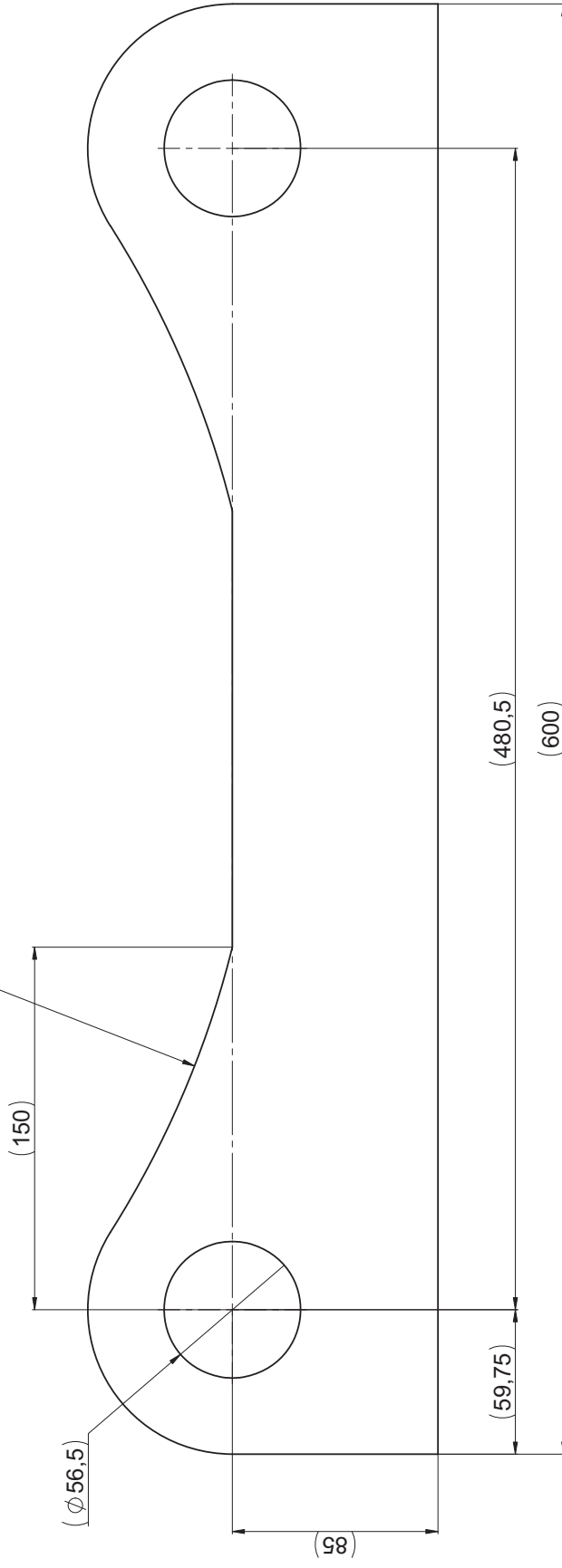


This drawing remains Steelwrist property and should not be copied without our written allowance. Nor is permitted to show or give this to a third person. Contravention will be prosecuted with the support of existing law.



2	2	Side Plate S60	202684
1	2	Shaft S60	100403
Item	Qty	Description	Note
Material			
Surface Treatment		Proj. Method E	Scale
-		General surf. roughn.	1:3
Material description, dimension		General surf. roughn.	Drawing size
Weight (kg)		A3	
34.71		All dimensions metric	
		Sharp edges broken 0.2-0.3	
		Hole edge radius: max 0.3	
		H11/h11	
General tolerances			
		ISO 2768-mk	
		ISO 2768-2 K	
		ISO 13920 CG	
		ISO 286-1:	
		H11/h11	
Description			
S60 Bucket Adaptor			
Drawn by		Approved by	Date
cri			2008-03-06
Drawing number		Revision	Sheet
202685		A	1(1)

(R400)

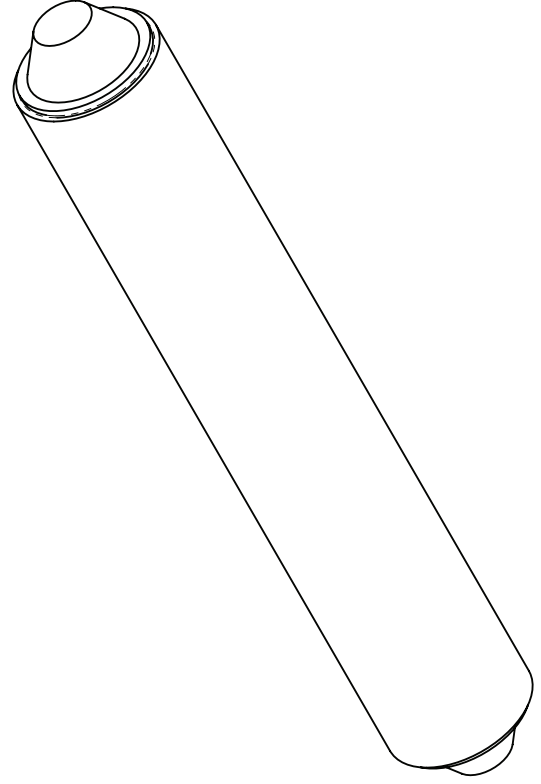
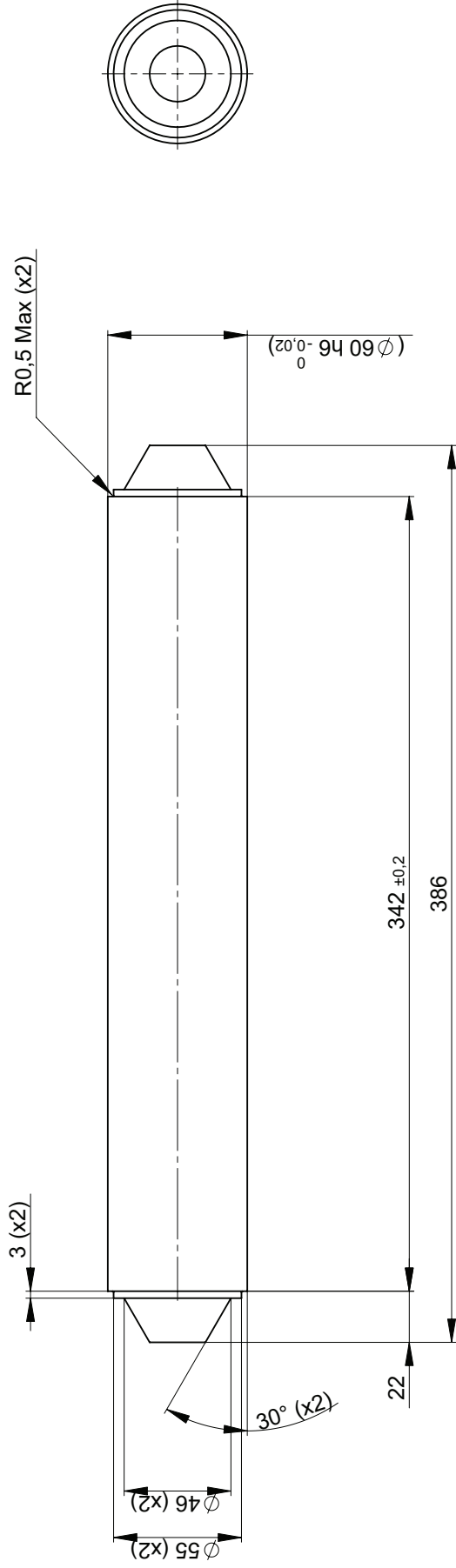


This drawing remains Steinhilber property and must not be copied without our written consent. No part is permitted to show or be used in any way without the support of existing law.

Material	Wellbo700	Proj. Method	Scale	Current Normative
Surface Treatment		ISO 2768-M	1:1	ISO 2768-MK
Material description, dimension		ISO 2768-S	A1	ISO 2768-2 K
Weight	9,41	ISO 13920 CG		ISO 13920 CG
t=20		All dimensions metric		ISO 13920 CG
		Sharp edges broken 0,2x0,3		ISO 13920 CG
		Plate edge condition		HT/HT1
Description	Side Plate S60	Weight	9,41	
Drawn by	cri	Approved by		
Drawn date	2008-03-06	Drawing number	202884	Revision
			A	1/2

Revision

- B: Chamfer 17x45° (x2) removed. R20 (x2) added. 060817 CRI.
- C: Redesign the axle ends. 386 was 392. 061009 CRI.



This drawing remains Steelwrist property and should not be copied without our written allowance. Nor is permitted to show or give this to a third person. Contravention will be prosecuted with the support of existing law.

Material	S355J2 (SS2142)	Proj. Method	E	Scale	1:2	General tolerances	ISO 2768-mk
Surface Treatment		General surf. roughn.	3,2	Drawing size	A3		ISO 2768-2 K
Material description, dimension	$\phi 60$ h6 grinded shaft	All dimensions metric Sharp edges broken 0.2-0.3 Hole edge radius: max 0.3					ISO 13920 CG
Name		Shaft S60					ISO 286-1: H11/h11
Drawn by		CRI		Checked by		Drawing number	100403
Drawn date		2006-10-10				Revision	C
Sheet		1(1)					